

MODEL: DSC-W830**No. E58409319****Subject: Compatibility information between SY board
and MM flex board****Date:** Aug. 08. 2014**Symptom:**

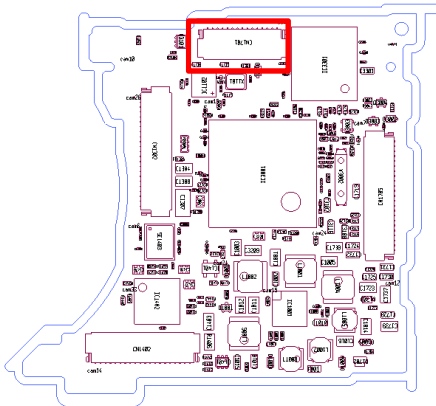
Because of design change, it is impossible to assemble revised SY board and previous MM flex board, also revised MM flex board and previous SY board.

Applicable S/N:

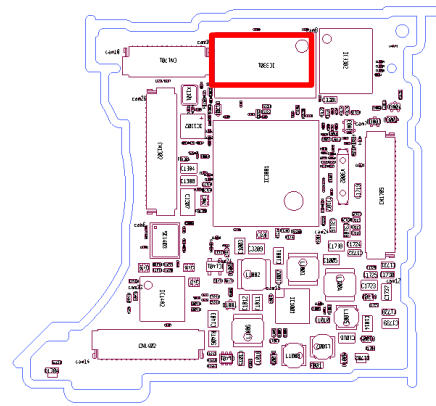
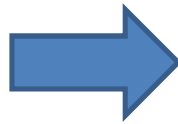
All

Solution:

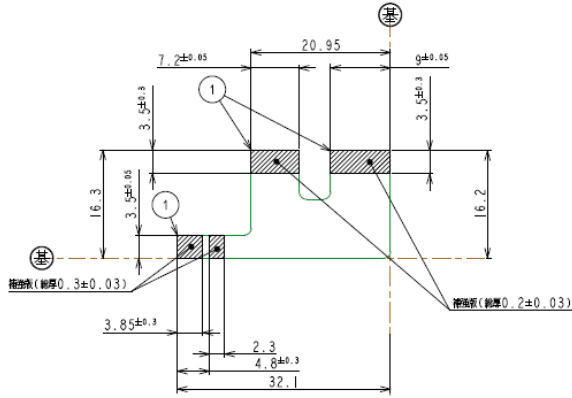
SY board layout changed and MM flex board connector position shifted because IC is discontinued.



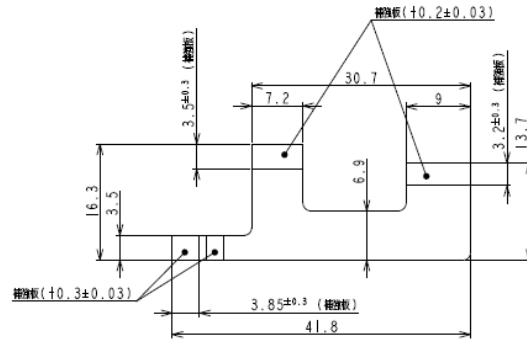
OLD SY board (PCB suffix -11)



NEW SY board (PCB suffix -21)



MM-1002 flex board



MM-1008 flex board

In case you replace SY board or MM flex board, see below matrix and choose suitable pair of parts.

	MM-1002 flex board	MM-1008 flex board
SY-1035 board (-11)	Available	Not Available
SY-1035 board (-21)	Not Available	Available

[NOTE]

1000 DSC-W830s which has suffix -21 board have been pre-shipped.

It will be replaced to suffix -21 boards in future (maybe Sep.'14) as soon as the suffix -11 boards are out of stock.

If you had the suffix -21 boards in DSC-W830 for repair in this period, you should replace not only SY board to suffix-11 but also MM-1008 flex board to MM-1002.

REQUIRED PART / TOOL / SOFTWARE

1-893-114-11 (MM-1008 FLEXIBLE PWB).